



# CONSIGLI

*Est. 1905*

## WINCHESTER HIGH SCHOOL – SCHEDULED WORK UPDATE

### Week of 11/01/2015

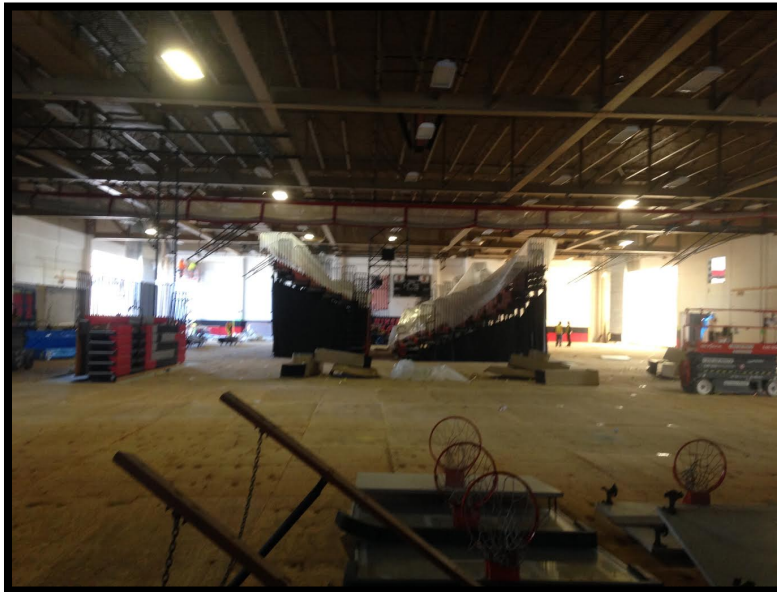
- Sitework:
  - Excavation for perimeter foundations and brick shelves
  - Form, rebar, and place concrete perimeter foundations and brick shelves
- Bldg C:
  - Install windows on east face
  - Frame interior walls
  - Install overhead mechanical, plumbing, and electrical
  - Cut holes for skylights and mechanical units on roof
- Bldg E:
  - Erect interior structural steel bracing
  - Exterior framing
  - Install Brick veneer and relieving angles
- Auditorium:
  - Install theater rigging in the Auditorium
- Saturday Work (10/31/15):
  - Sidewalk caulking at front entrance
  - Sprinkler repair
  - Install brick veneer



**Bldg E South Façade**



**Bldg C North Façade**



**Gymnasium**