



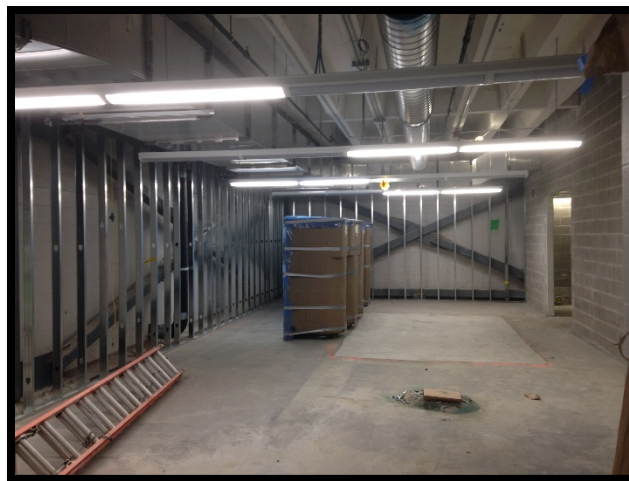
# CONSIGLI

*Est. 1905*

## WINCHESTER HIGH SCHOOL – SCHEDULED WORK UPDATE

### Week of 02/07/2016

- Building C:
  - Install/Insulate overhead mechanical, plumbing, and electrical
  - Install drywall/tape in classrooms
  - Prime/Paint drywall in corridors
  - Install ceiling grid in corridors
  - Install arriscraft veneer on west side
  - Install terracotta veneer on north side
- Building E:
  - Install/Insulate overhead MEP's on level 2 and level 1
  - Frame low walls on level 2
  - Install drywall in corridors on level 1
  - Paint ceilings on level 2 and CMU level 1
  - Install CMU shafts on level 2
  - Install arriscraft veneer on west side
  - Install curtain walls on south side
  - Install windows on east side



**Bldg E Level 1 – Locker Rooms**



**Bldg C North: Terracotta at Curtain Wall**



**Bldg C Level 2 – Corridor Paint & Ceiling Grid**