



# CONSIGLI

*Est. 1905*

## WINCHESTER HIGH SCHOOL – SCHEDULED WORK UPDATE

### Week of 02/21/2016

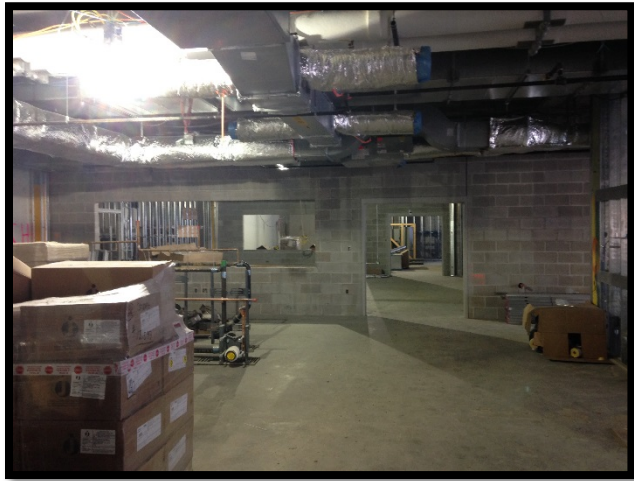
- Building C:
  - Install/Insulate overhead MEP's on level 1
  - Install drywall/tape in classrooms
  - Prime/Paint drywall in classrooms
  - Install ceiling grid in corridors and classrooms
  - Install light fixtures in classrooms
  - Install arriscraft veneer on west side
  - Install terracotta veneer on north side
- Building E:
  - Install/Insulate overhead MEP's on level 2 and level 1
  - Install drywall/tape in corridors on level 1
  - Install misc. metal clips and pipe tube on level 1
  - Paint ceilings on level 2
  - Install arriscraft veneer on west side
  - Install curtain walls on south side
  - Install windows on east side
  - Install canopy on south side



**Bldg C Classrooms – Light Fixture & Ceiling Grid Install**



**Bldg C West: Arrsicraft Veneer Installation**



**Bldg E Level 1 – Shops & Labs**