



CONSIGLI

Est. 1905

WINCHESTER HIGH SCHOOL – SCHEDULED WORK UPDATE

Week of 12/20/2015

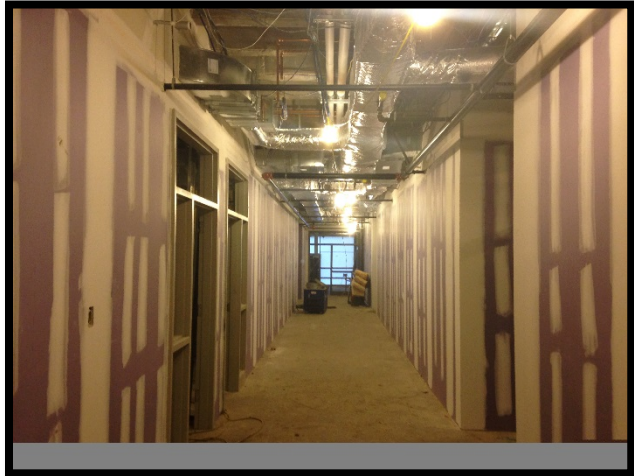
- Sitework:
 - Form, rebar, and place concrete slab at loading dock
- Building C:
 - Install/Insulate overhead mechanical, plumbing, and electrical
 - Install/Insulate in-wall mechanical, plumbing, and electrical
 - Install drywall in corridors
 - Install brick on north side
 - Install arriscraft and terracotta on east side
 - Install through wall flashing
- Building E:
 - Erect interior structural steel bracing on level 2
 - Install/Insulate overhead MEP's in gym and level 1
 - Frame interior walls on level 1
 - Install brick relieving angles on exterior
 - Install Brick Veneer on east side



Bldg C North – Loading Dock and Brick Install



Bldg E Level 1: Locker Room Corridor



Bldg C Level 2 – Main Corridor